



ΩMEGA

Residences



*An Elite Community*



Omega Residences is a contemporary 3-floor development featuring a modern, angular design reminiscent of the last letter of the Greek alphabet, Ω, or Omega. This unique design, which cuts through the façade diagonally, creates a bold exterior that stands out among the building's exclusive surroundings.







Comprising four generously spaced out apartments, including a penthouse boasting its own roof garden, Omega Residences is located in the heart of Limassol's bustling Germasogeia area. This elite neighborhood is located far enough from the city center to allow residents a peaceful respite from the hubbub, and offer them the safety and peace of mind of living in a quiet residential area, yet it is close enough so that all amenities are just a stone's throw away. Residents who wish to fully indulge in all the perks of island living can also take advantage of the famed Blue Flag Dasoudi Beach, which is situated mere steps from the development.









## *A Distinctly Modern Aesthetic*

The jagged zig-zag that appears to cut diagonally across the building forms a distinctly modern façade which is accentuated by a variety of additional mixed materials. Stark white is offset by dark greys, while wooden louvers add an element of warmth and also help shade key areas of the development while still allowing an abundance of natural light to stream through. Large balconies featuring glass railings allow residents the opportunity to enjoy sweeping views of the Limassol cityscape and the Mediterranean Sea beyond, right from the comfort of their very own home.





## Comfortable Elegance and Style

The Omega Residences are generously spaced out across three floors. The first two floors comprise two apartments of two bedrooms each, while the third floor comprises a pent-house with three bedrooms, featuring its very own roof garden. The interior of each apartment has been stylishly and elegantly crafted and fitted with the highest quality of finishes, including robust parquet floors in the open-plan kitchen and living areas, and gleaming marble countertops in the kitchen. Large, floor-to-ceiling windows open out onto ample well-lit balconies, while each apartment also comes with its own covered parking area and storage space.







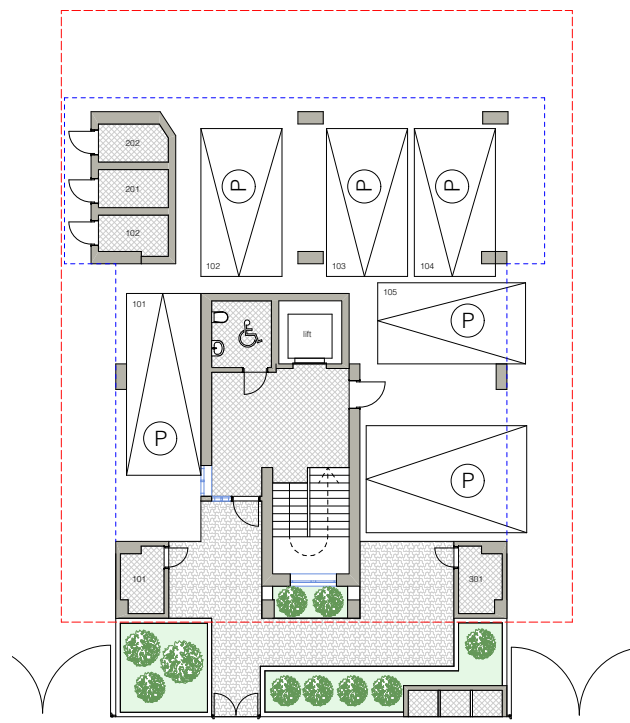
Floor Plans

UNIT No	BEDROOMS	TOTAL AREA m2	ROOF GARDEN
101	2	112	-
102	2	112	-
201	2	112	-
202	2	112	-
301	3	147	YES

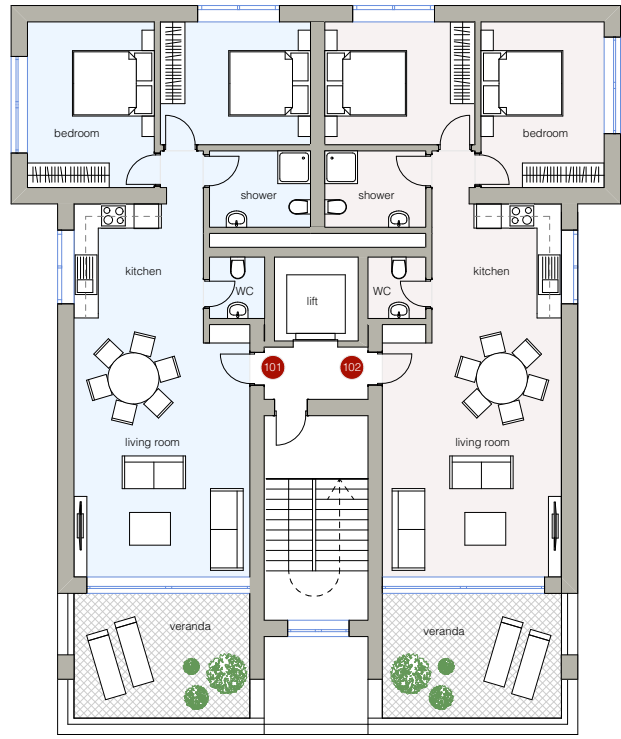




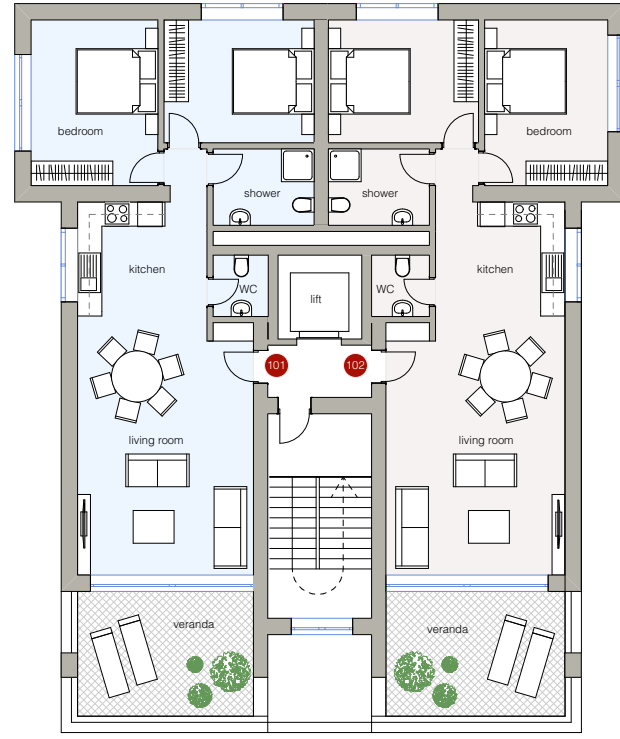
Omega **Ground Floor**



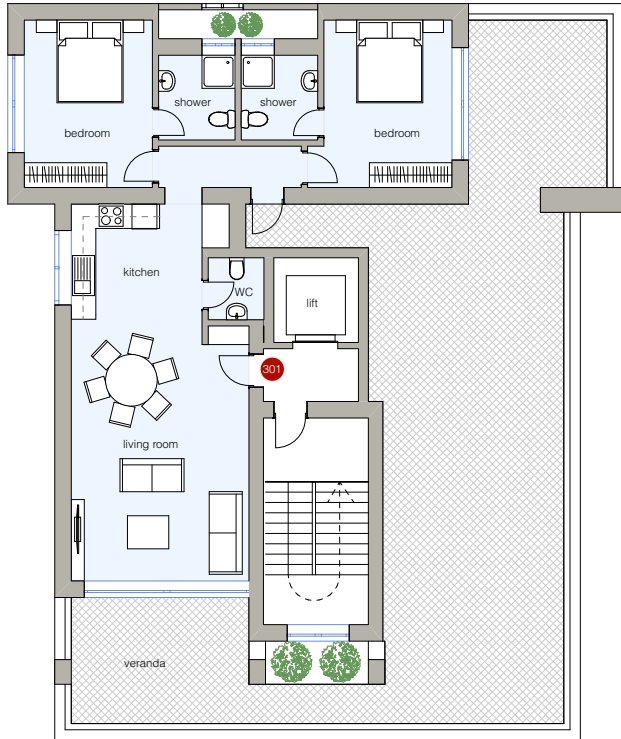
Omega **101-102**



Omega **201-202**



Omega **301**







# ΩMEGA

Residences











# PROPERTY

## GALLERY

1 Georgiou A', Monastiraki center, Offices 3/4/5. Limassol 4040, Cyprus  
P. +357 25 73 1111 | E. [sales@cypruspropertygallery.com](mailto:sales@cypruspropertygallery.com)  
FREE CALL 8000 83 84

[www.cypruspropertygallery.com](http://www.cypruspropertygallery.com)